

Instruction Sheet: Volume Adjustment (Calibration) for Dairy Dispensers with C-01-008 Circuit Board

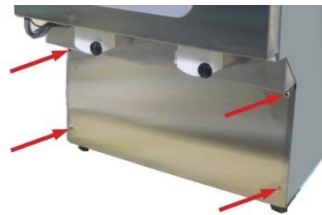
When to Adjust the Volume

Before making an adjustment to the dispense amounts:

- Thoroughly clean the entire valve assembly (valve, plunger and solenoid).
- Check that the target adjustment values are set to the correct amounts.
- Load a full bag of product, then dispense and weigh each size. If your dispense amounts are still incorrect, proceed by making a volume adjustment. If using product tanks, do not forget to refill and reset your tank to the proper level.
- Check that the bag/tank setting in the dispenser is set to the correct type.

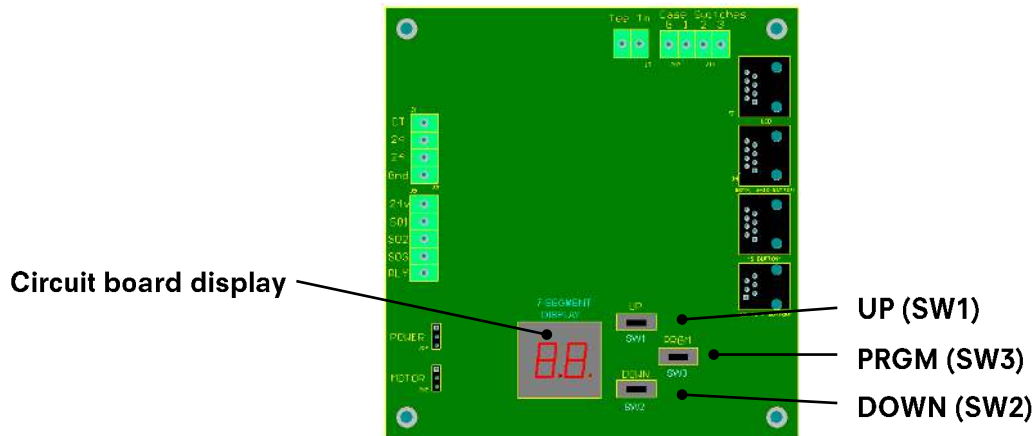
Adjust the Volume

1. Locate and remove the front panel cover secured with 4 Phillips screws.



2. To enter program mode, press and hold the **PRGM** button on the circuit board. After 7 seconds the dispenser will beep twice to indicate you have entered program mode.

C-01-008 Circuit Board



3. Press the **UP** or **DOWN** button several times until the door display shows `Volume Adj.` The circuit board display will show `P2`.
4. Press the **PRGM** button to enter this page.
5. For one product dispensers:
 - a. If you see a two-digit value on the circuit board display (i.e. `50`), you are ready to make the volume adjustment. Press the **UP** button to increase the volume or the **DOWN** button to decrease the volume. In this case, the volume adjust procedure will adjust all sizes at once, you cannot adjust each size individually.
 - b. If you **do not see** a two-digit value on the circuit board display, press a beverage type button (if applicable) and then a size button for the size you wish to adjust. You should now see a two-digit

If you have any questions or concerns while performing this procedure, please contact the SureShot Solutions Technical Assistance Center by phone at 1-888-777-9990 or e-mail at service@sureshotsolutions.com. Find other helpful instruction sheets and videos on our website: www.sureshotsolutions.com.

value on the circuit board display (i.e. 50), you are now ready to make the volume adjustment. In this case, you will need to perform the volume adjust procedure for each size you wish to adjust. Press the **UP** button to increase the volume or the **DOWN** button to decrease the volume. Repeat this process for each size and beverage combination you wish to adjust.

6. For two or three product dispensers:
 - a. Press a product button on the button panel.
 - i. If you see a two-digit value on the circuit board display (i.e. 50), you are ready to make the volume adjustment. Press the **UP** button to increase the volume or the **DOWN** button to decrease the volume. In this case, the volume adjust procedure will adjust all sizes at once for the selected product, you cannot adjust each size individually.
 - ii. If you **do not see** a two-digit value on the circuit board display, press a beverage type button (if applicable) and then a size button for the size you wish to adjust. You should now see a two-digit value on the circuit board display (i.e. 50), you are now ready to make the volume adjustment. In this case, you will need to perform the volume adjust procedure for each size you wish to adjust for the selected product. Press the **UP** button to increase the volume or the **DOWN** button to decrease the volume. Repeat this process for each size and beverage combination you wish to adjust.
7. Once all of the adjustments are complete, press the **PRGM** button once to exit this page. Then press and hold the **PRGM** button to exit program mode. After 7 seconds the dispenser will beep twice to indicate you have exited program mode.
8. Once you have exited program mode, dispense the product and sizes you previously adjusted and verify these are now correct. If they are not, repeat steps 1 through 7.
9. Reinstall the front panel cover.

If you have any questions or concerns while performing this procedure, please contact the SureShot Solutions Technical Assistance Center by phone at 1-888-777-9990 or e-mail at service@sureshotsolutions.com. Find other helpful instruction sheets and videos on our website: www.sureshotsolutions.com.