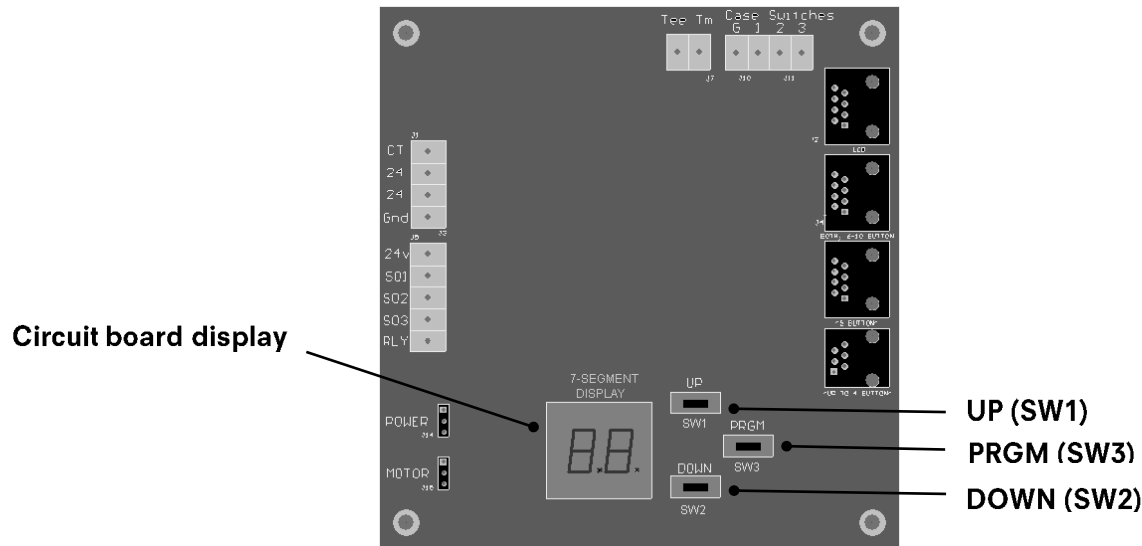


Instruction Sheet:

Adjusting the Displayed Temperature (circuit board C-01-008)

Before making this adjustment, make sure the product has been in the refrigerated compartment of the dispenser for 24 hours. Then, record the temperature displayed on the dispenser door. Use a high quality, accurate thermometer to measure and record the actual temperature of the stabilized product. If the displayed temperature and the actual product temperature do not match, proceed to Step 1.



Adjust the displayed temperature

1. Remove the lower stainless steel splash panel. It is located below the white plastic valve(s) that holds the product tube(s). It is held in place by 4 screws.
2. Locate the circuit board inside the front of the dispenser.
3. Enter Program mode. Press and hold the **PRGM** button for approximately 5 seconds. A beep will be heard and the circuit board display will show P1.
4. Release the **PRGM** button; you are now in program mode. You will see Target on the door display.
5. Press the **UP** button repeatedly until T0 is shown on the door display. Do not press and hold the button.
6. Press the **PRGM** button once to enter the temperature offset page. The temperature offset (TO) value will appear. The default setting is 07.
7. To increase the displayed temperature, press the **UP** button. To decrease the displayed temperature, press the **DOWN** button. Each increase or decrease changes the displayed temperature by 2 °F. For example, if the display reads 4 °F higher than the product temperature, press the down button twice.
8. Exit Program mode.
 - a. Press the **PRGM** button to exit the temperature offset page.
 - b. Press and hold the **PRGM** button for approximately 5 seconds, until the dispenser beeps once.
 - c. Release the **PRGM** button. The circuit board display will show the new display temperature, which indicates that the dispenser is in normal operating mode.

If you have any questions or concerns while performing this procedure, please contact the SureShot Solutions Technical Assistance Center by phone at 1-888-777-9990 or e-mail at service@sureshotsolutions.com. Find other helpful instruction sheets and videos on our website: www.sureshotsolutions.com.