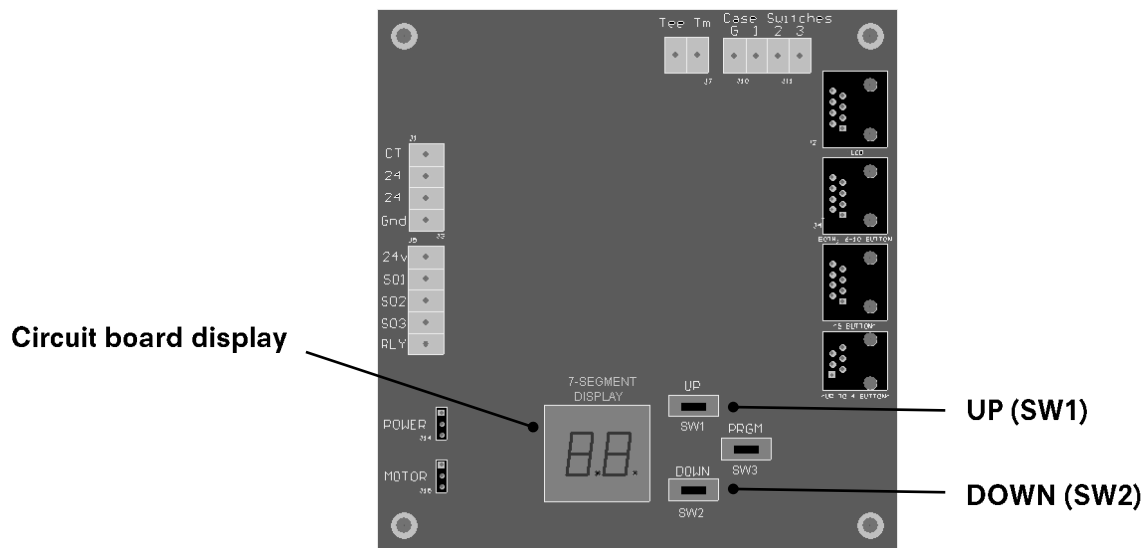


Instruction Sheet: Temperature Adjustment (C-01-008 circuit board)

The temperature in the refrigerated product compartment is set at our factory for normal use in the North American food service industry. The temperature is set to maintain the product within the range of 35 °F to 40 °F (1.6 °C to 4.4 °C). The temperature is controlled using the push buttons SW1 and SW2 located at the bottom right of the circuit board.

1. Remove the lower stainless steel splash panel. It is located below the white plastic valve(s) that holds the product tube(s). It is held in place by 4 screws.
2. Locate the circuit board that has electronic components on it. A red light should be on, indicating power is supplied to the board.
3. Locate the SW1 (UP) and SW2 (DOWN) buttons, which are on the middle bottom of the circuit board.
4. Press either the **UP** or **DOWN** button to see, on the circuit board display, what the refrigeration setting is currently. From the factory, this setting is normally between 04 and 09. The full range of adjustment is 00 (off) to 12 (coldest).
5. Follow the instructions below for adjustments, depending on whether the dispenser is too cold or too warm.



If the dispenser is too cold

To increase the temperature (make it warmer), press the **DOWN** button once to show the current setting, then immediately press the **DOWN** button a second time to make the refrigeration setting warmer. The circuit board display should indicate this new setting. Allow this adjustment to take effect for 3 hours. If the dispenser is still too cold, repeat this procedure. Do not set the refrigeration to 00 because this is the off position.

If the dispenser is too warm

To decrease the temperature (make it colder), press the **UP** button once to show the current setting, then immediately press it a second time to make the refrigeration setting colder. The circuit board display should show this new setting. Allow this adjustment to take effect for 3 hours. If the dispenser is still not cold enough, repeat this procedure.

If, after these adjustments are made, your dispenser is still too cold or too warm, please contact the SureShot Solutions Technical Assistance Center at 1-888-777-9990 or 1-902-865-9602.

If you have any questions or concerns while performing this procedure, please contact the SureShot Solutions Technical Assistance Center by phone at 1-888-777-9990 or e-mail at service@sureshotsolutions.com. Find other helpful instruction sheets and videos on our website: www.sureshotsolutions.com.