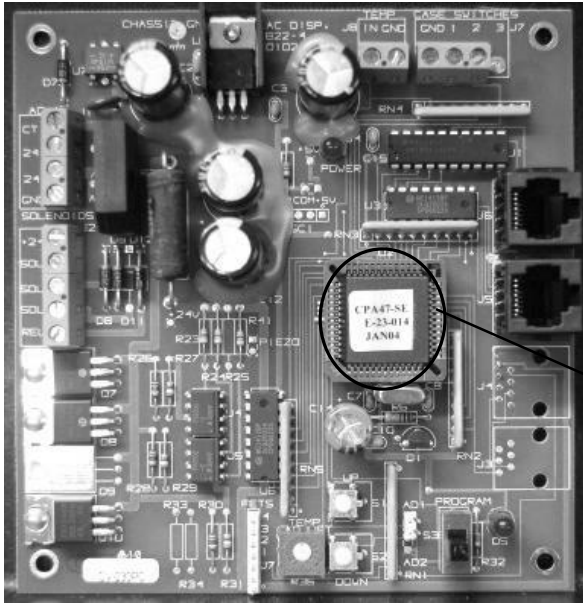


Instruction Sheet: Identifying and Upgrading your Circuit Board

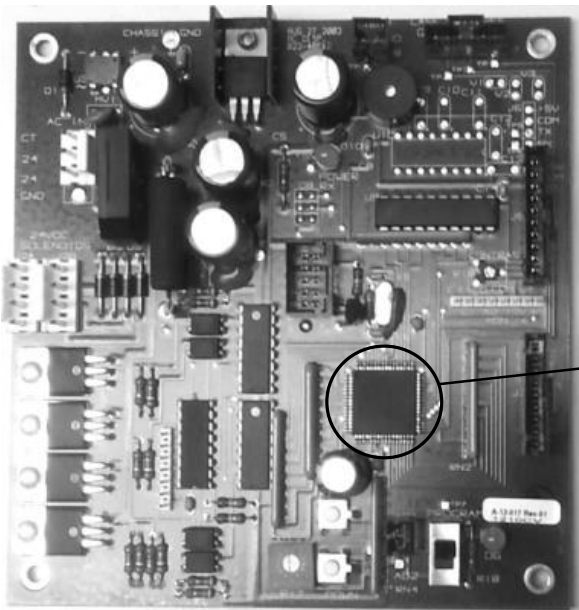
SureShot dispensers can be upgraded in one of two ways. If the dispenser has a B16 or a flash circuit board, the circuit board has to be replaced with a new circuit board. If the dispenser has a C-01-008 or a C-01-109 red circuit board, the circuit board can be updated using a fob, which transfers software to the dispenser. A new circuit board or a fob can be ordered from SureShot.

These circuit boards must be replaced.



Removable chip

B16 circuit board



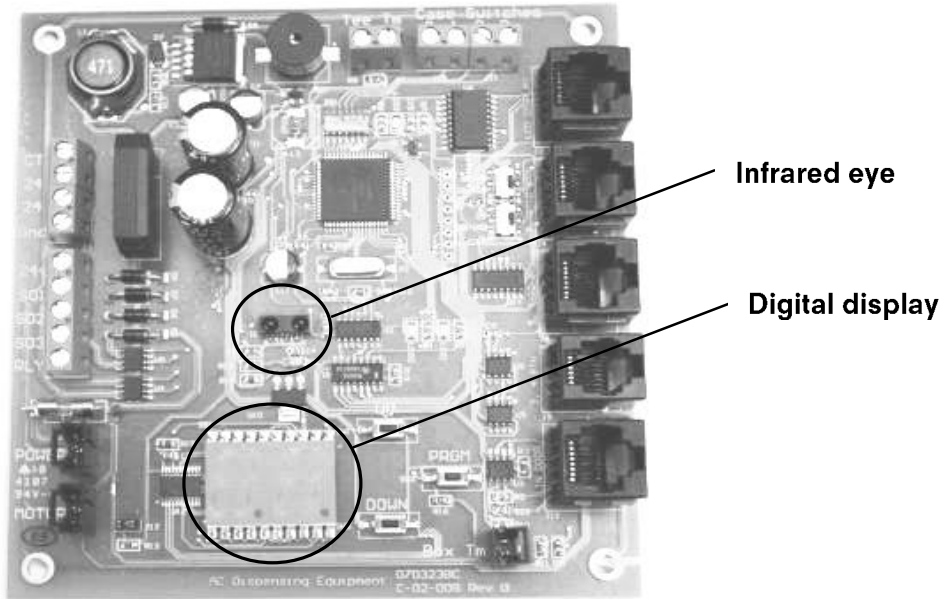
Permanent chip

Flash circuit board

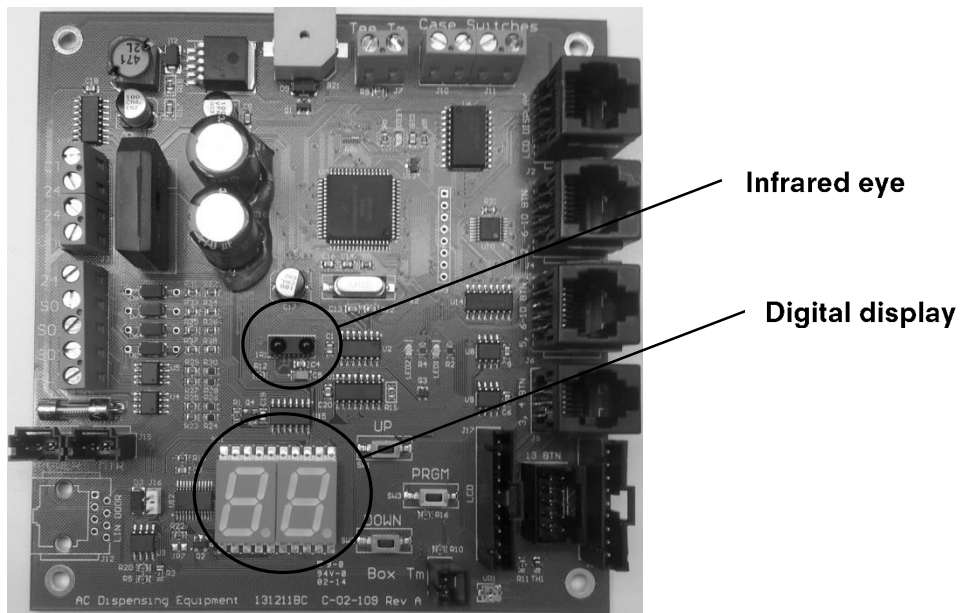
If you have any questions or concerns while performing this procedure, please contact the SureShot Solutions Technical Assistance Center by phone at 1-888-777-9990 or e-mail at service@sureshotsolutions.com.

Instruction Sheet: Identifying and Upgrading your Circuit Board

These circuit boards can be updated using a fob. These boards both have an infrared "eye" and a 2-digit digital display.



C-01-008 circuit board



C-01-109 red circuit board

If you have any questions or concerns while performing this procedure, please contact the SureShot Solutions Technical Assistance Center by phone at 1-888-777-9990 or e-mail at service@sureshotsolutions.com.